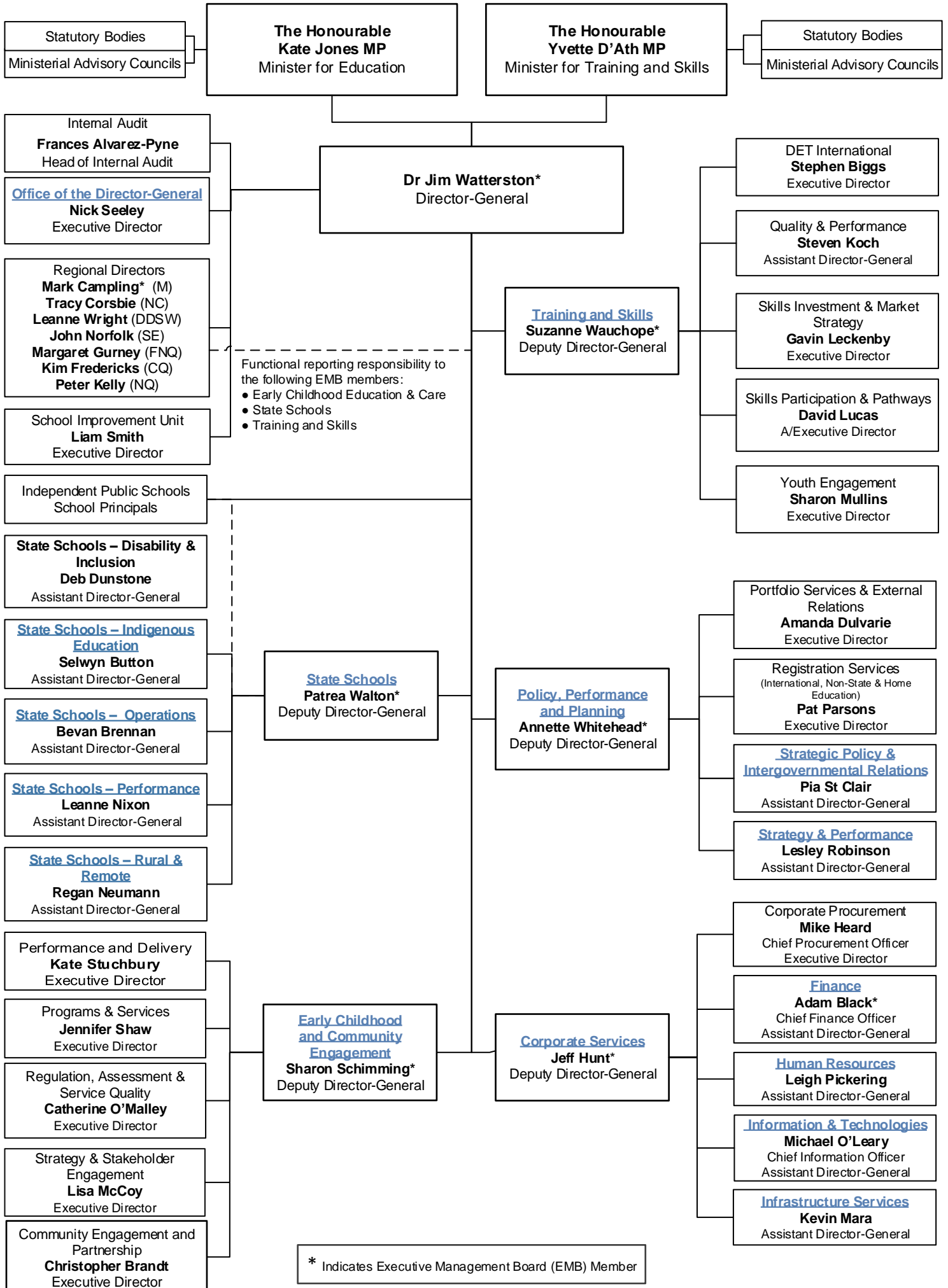
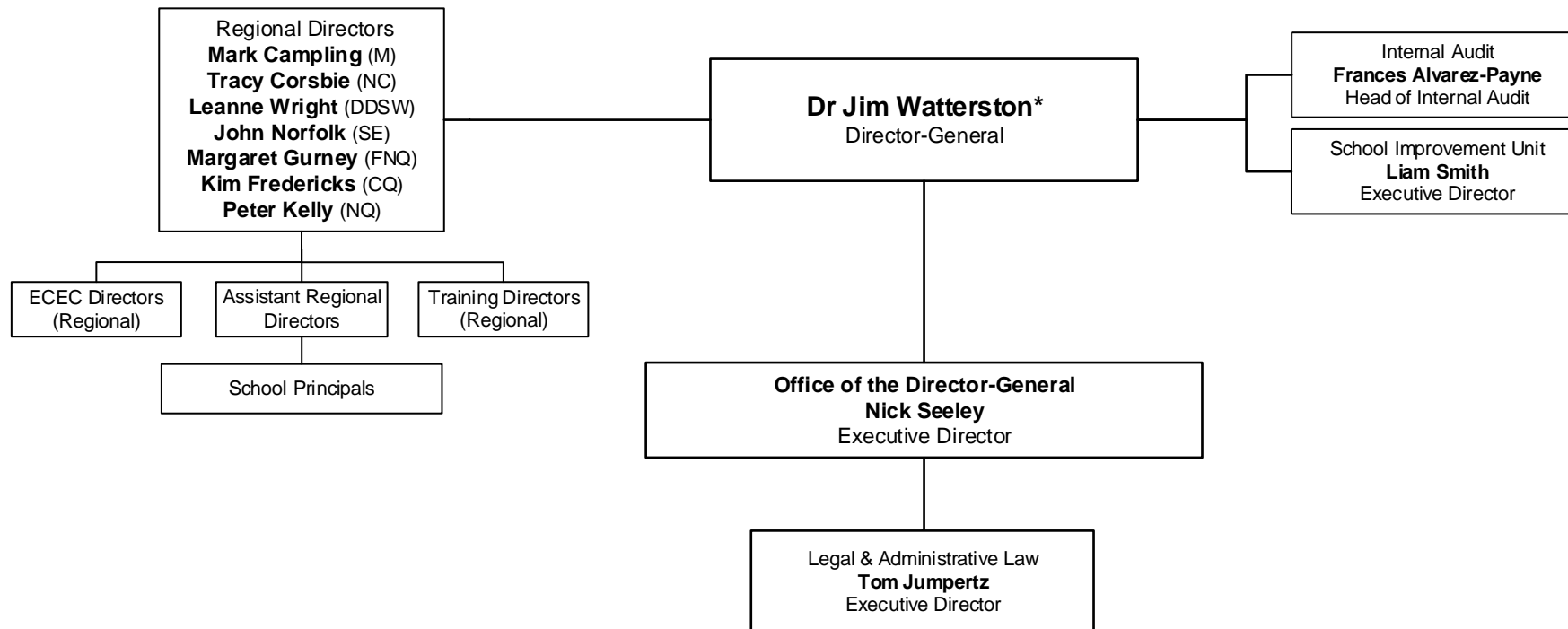


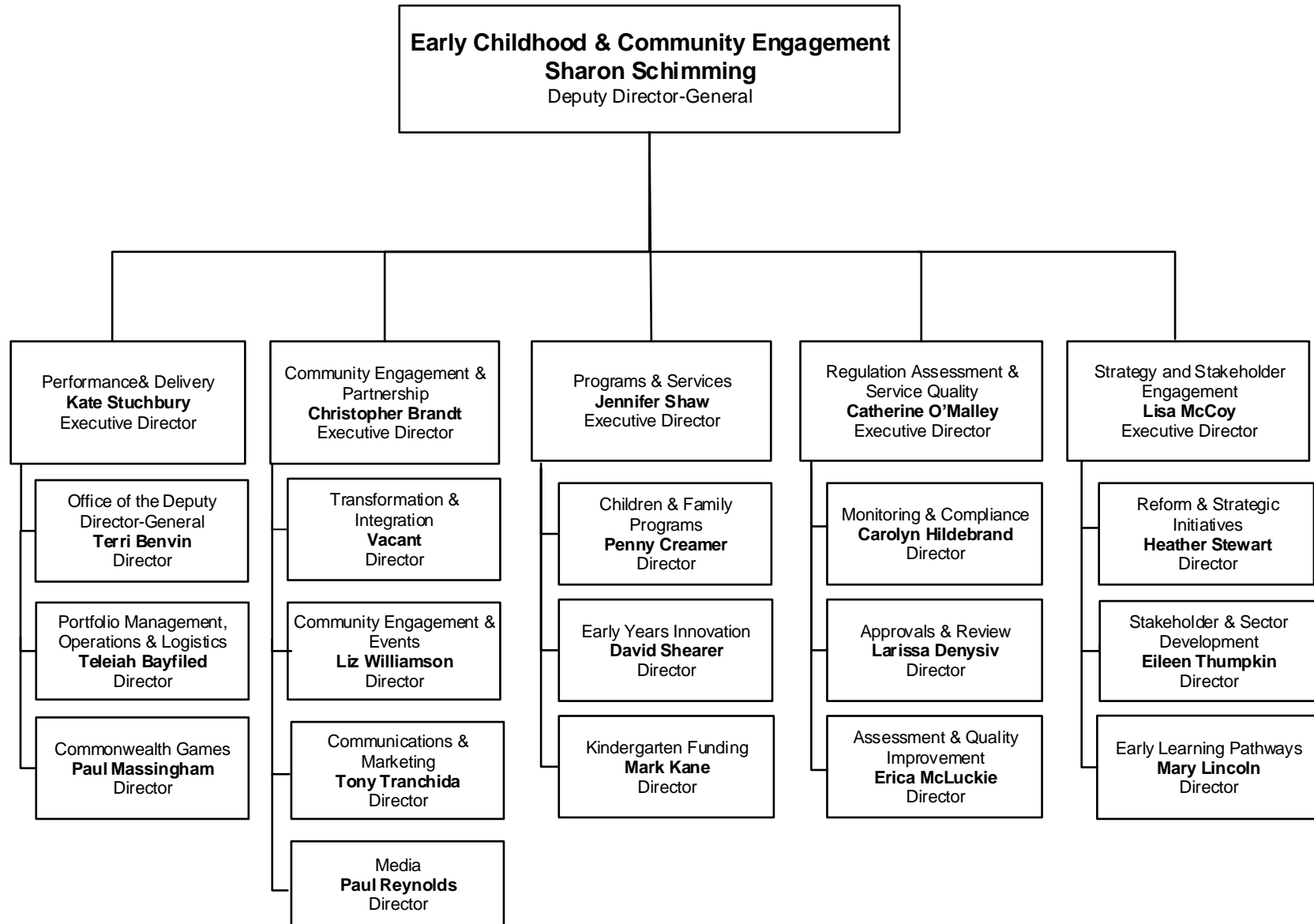
# Department of Education and Training Organisational Structure as at August 2017



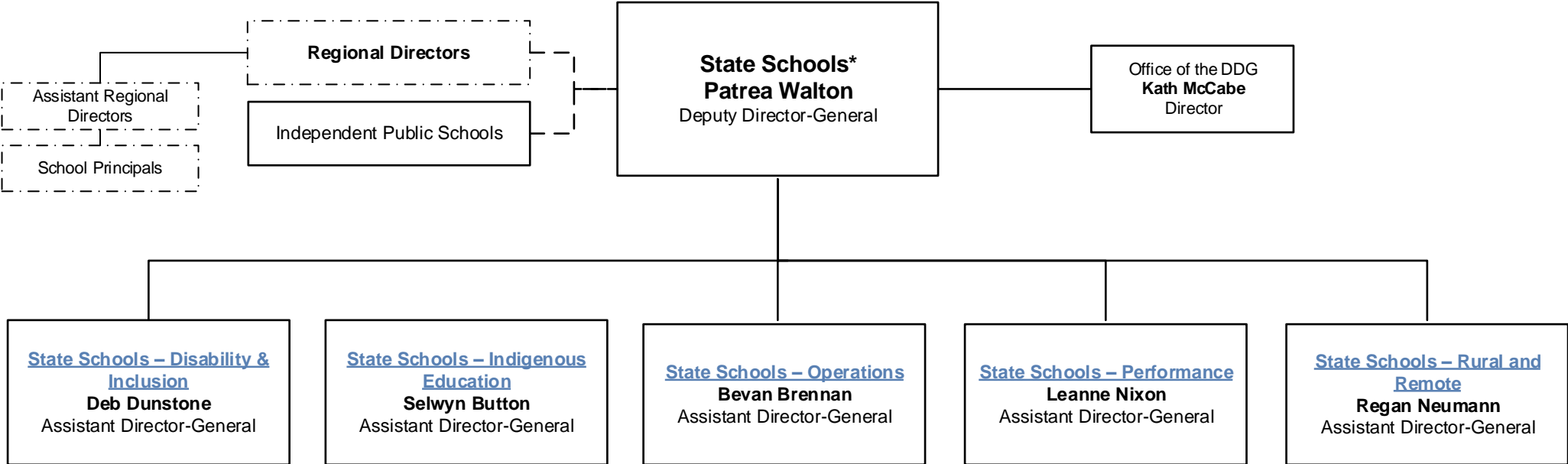
# Office of the Director-General



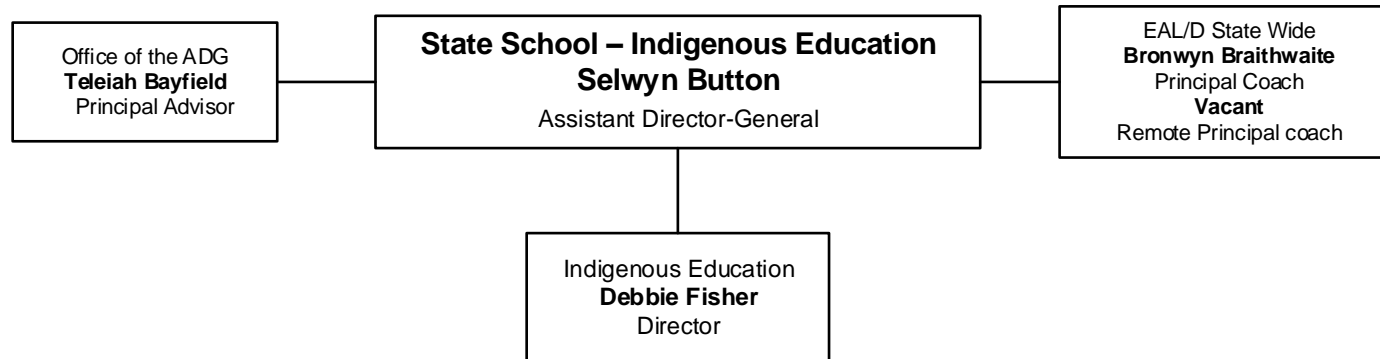
# Early Childhood and Community Engagement



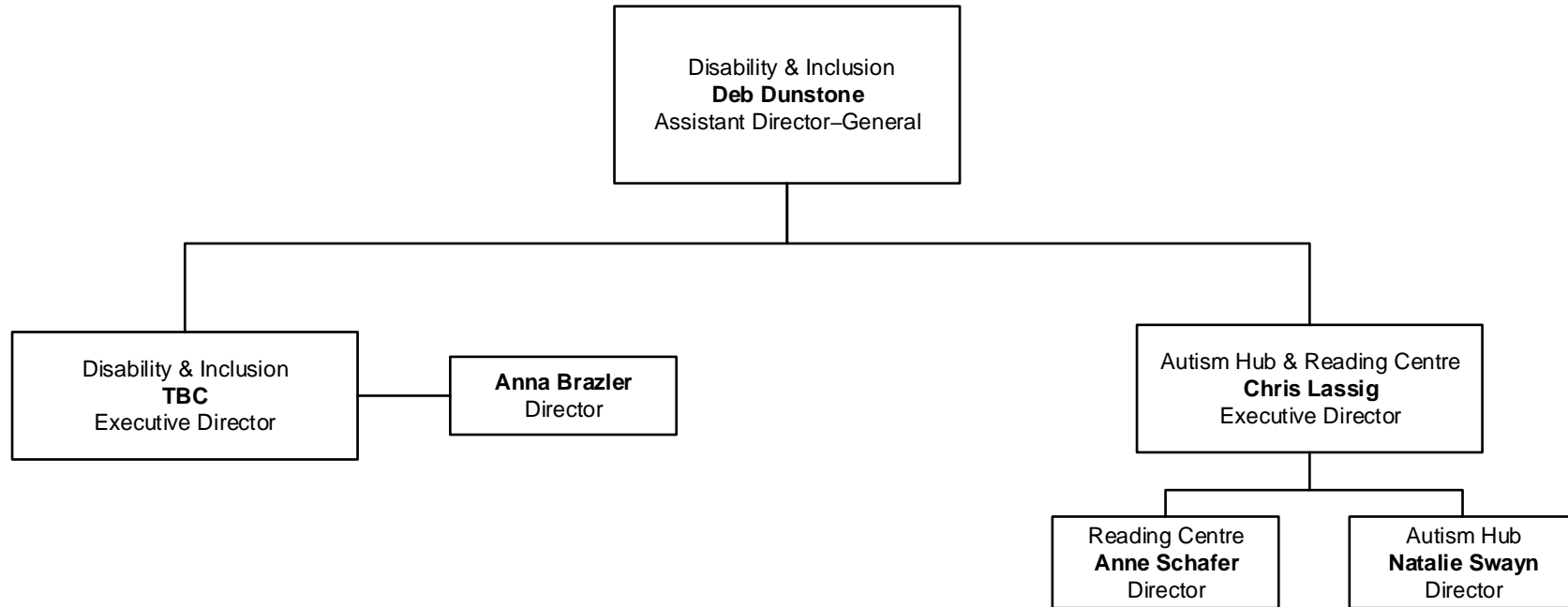
# State Schools



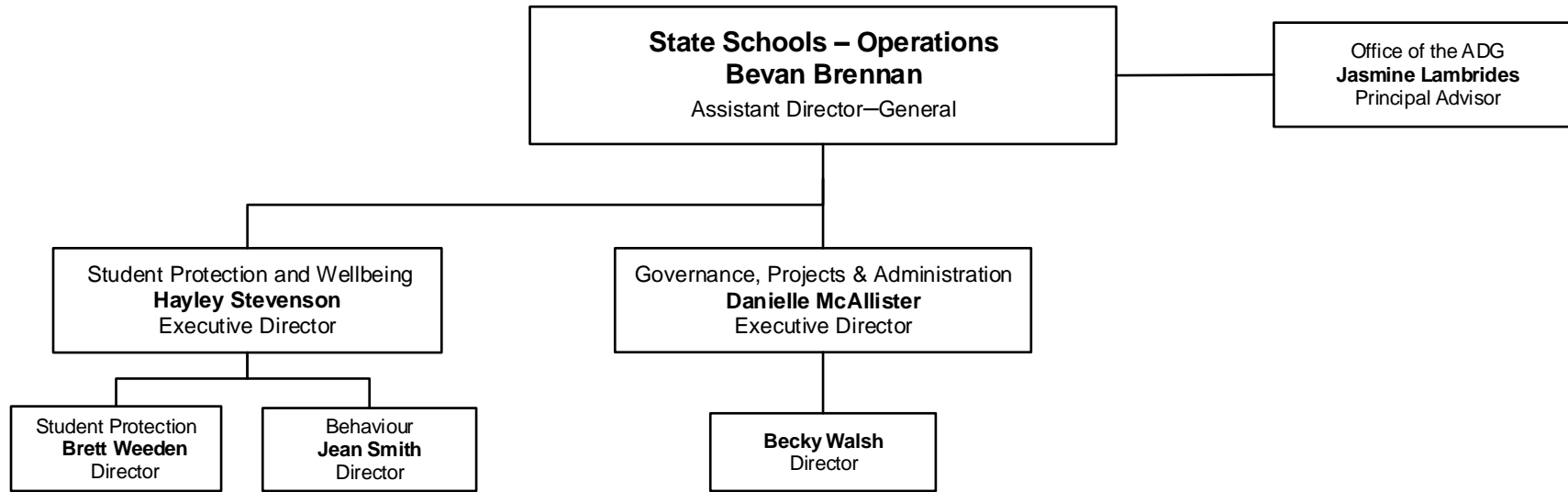
# State Schools – Indigenous Education



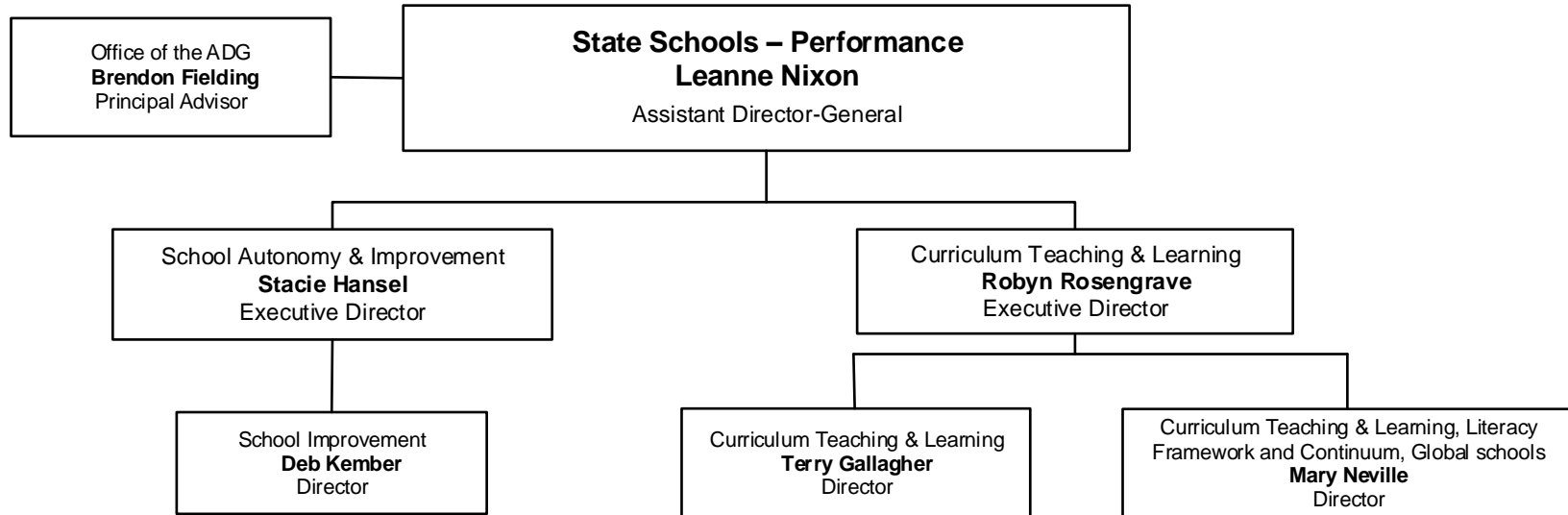
# State Schools – Disability and Inclusion



# State Schools – Operations

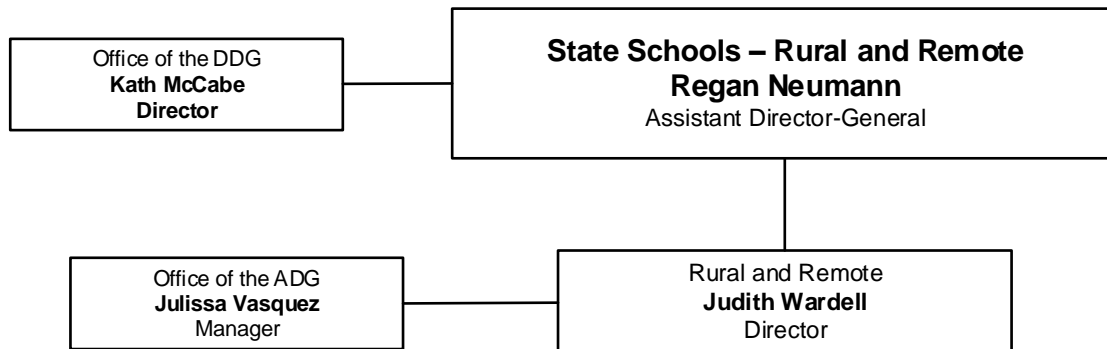


# State Schools – Performance

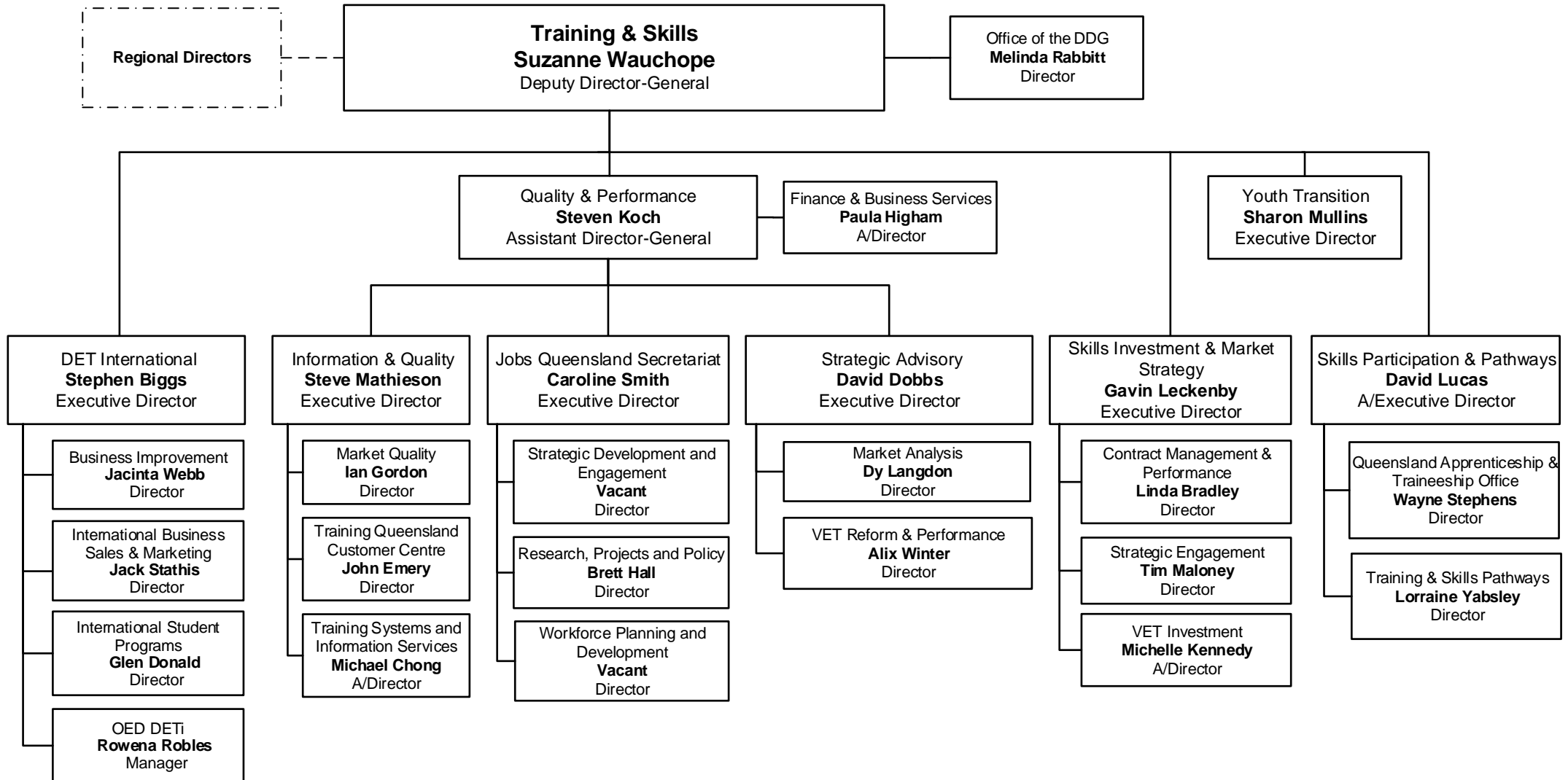




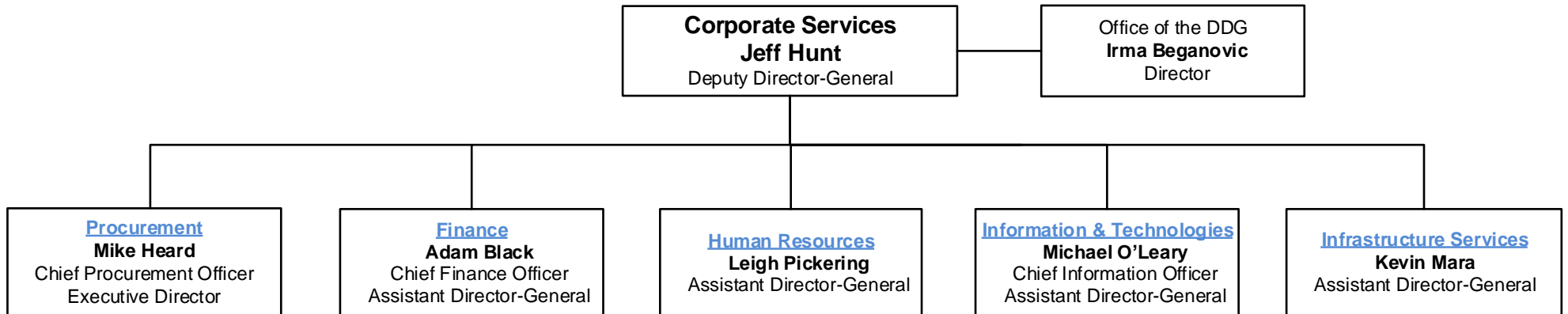
# State Schools – Rural and Remote



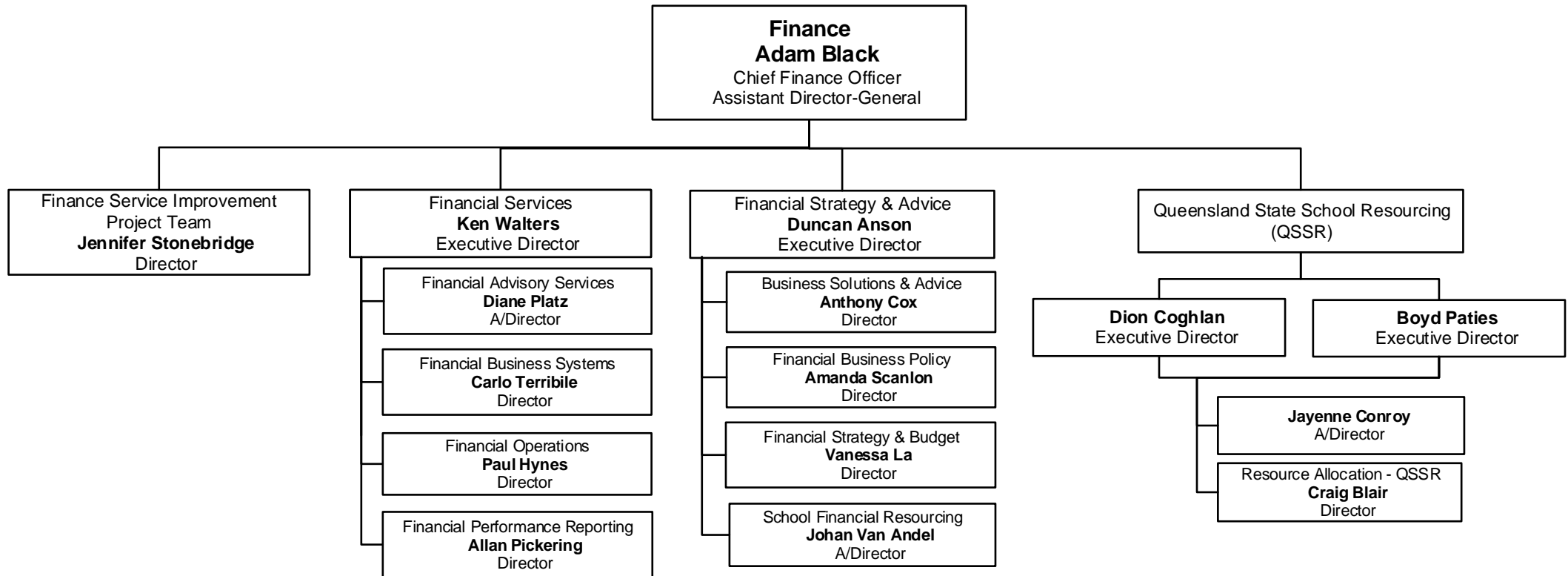
# Training and Skills



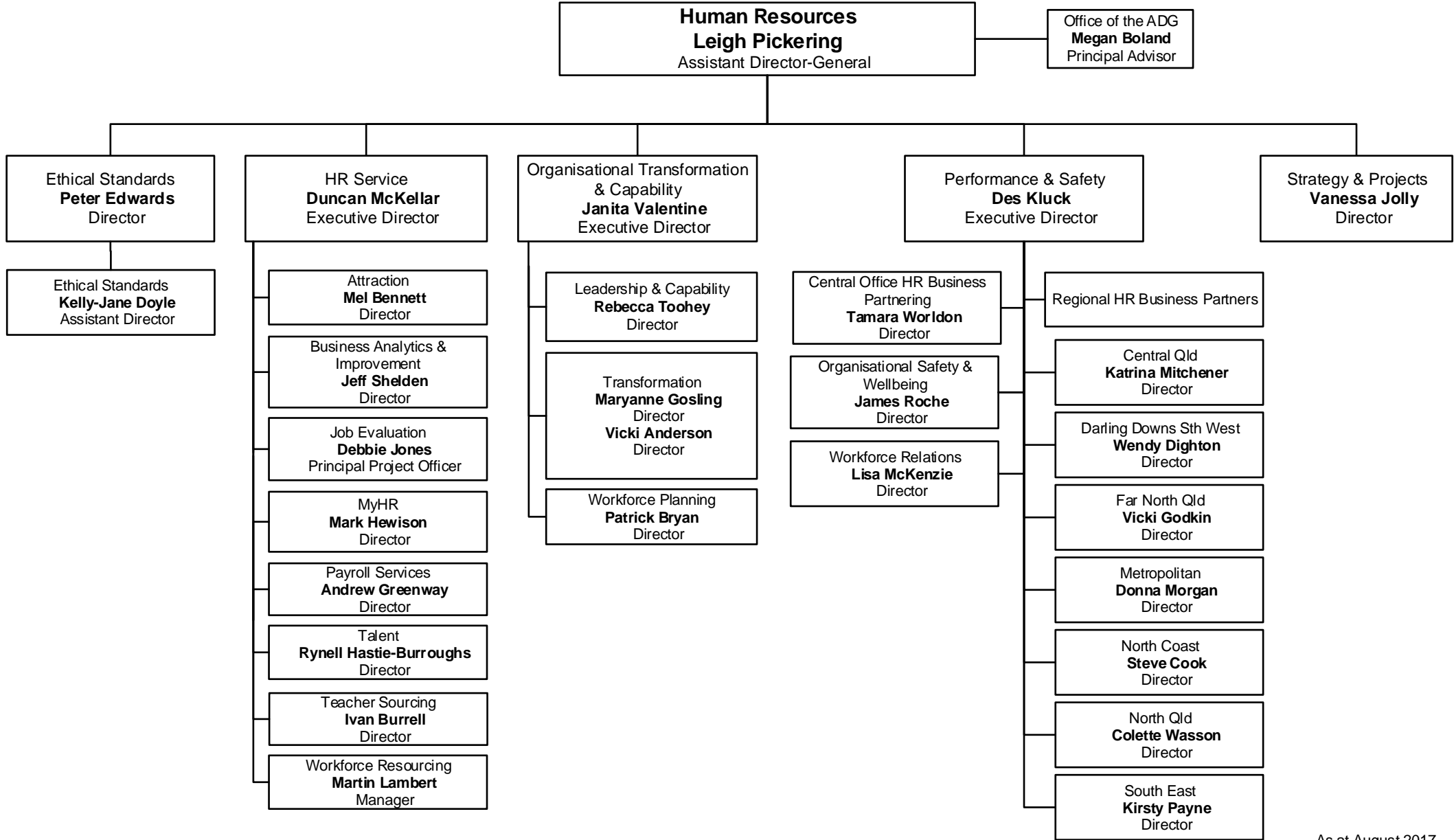
# Corporate Services



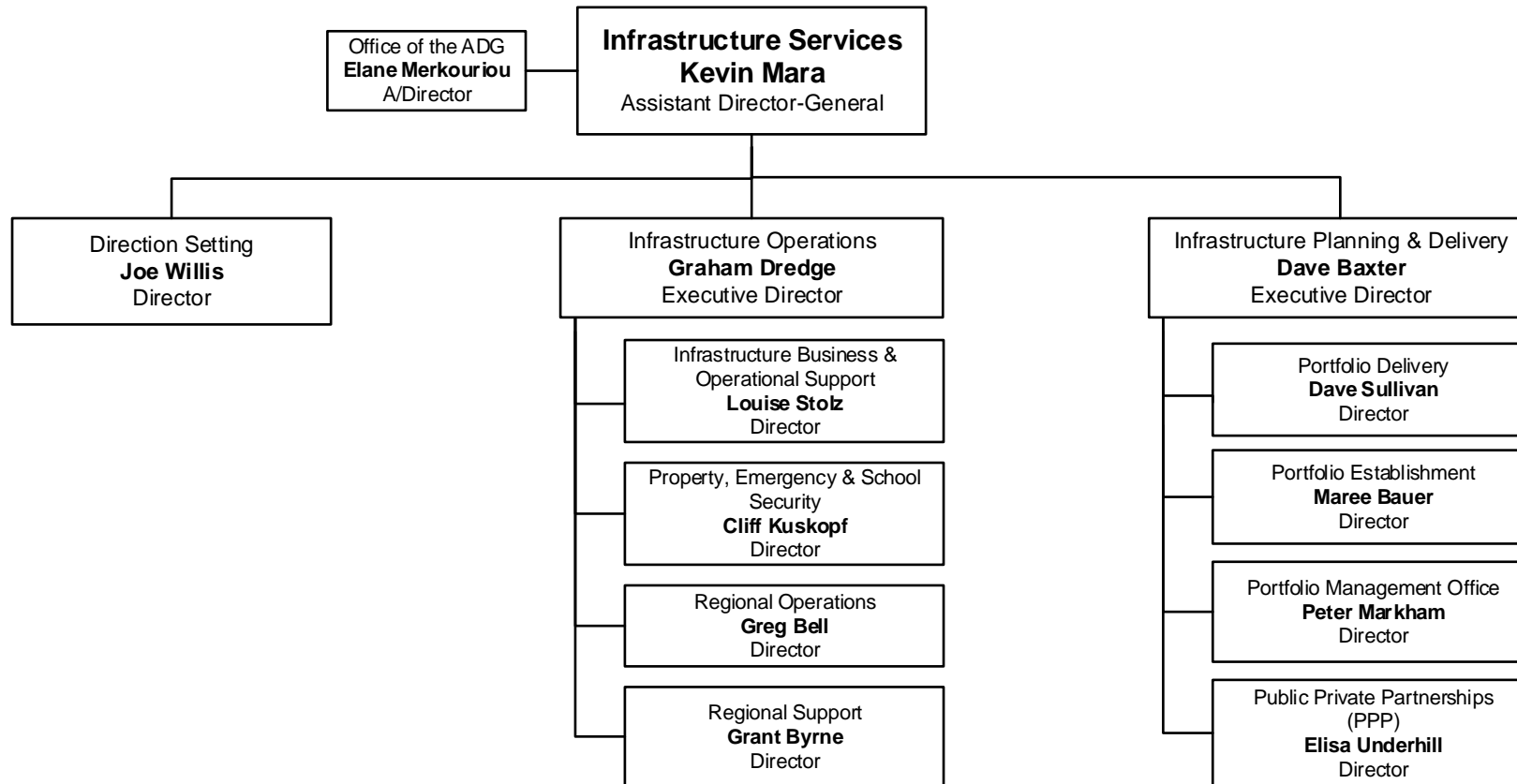
# Finance



# Human Resources



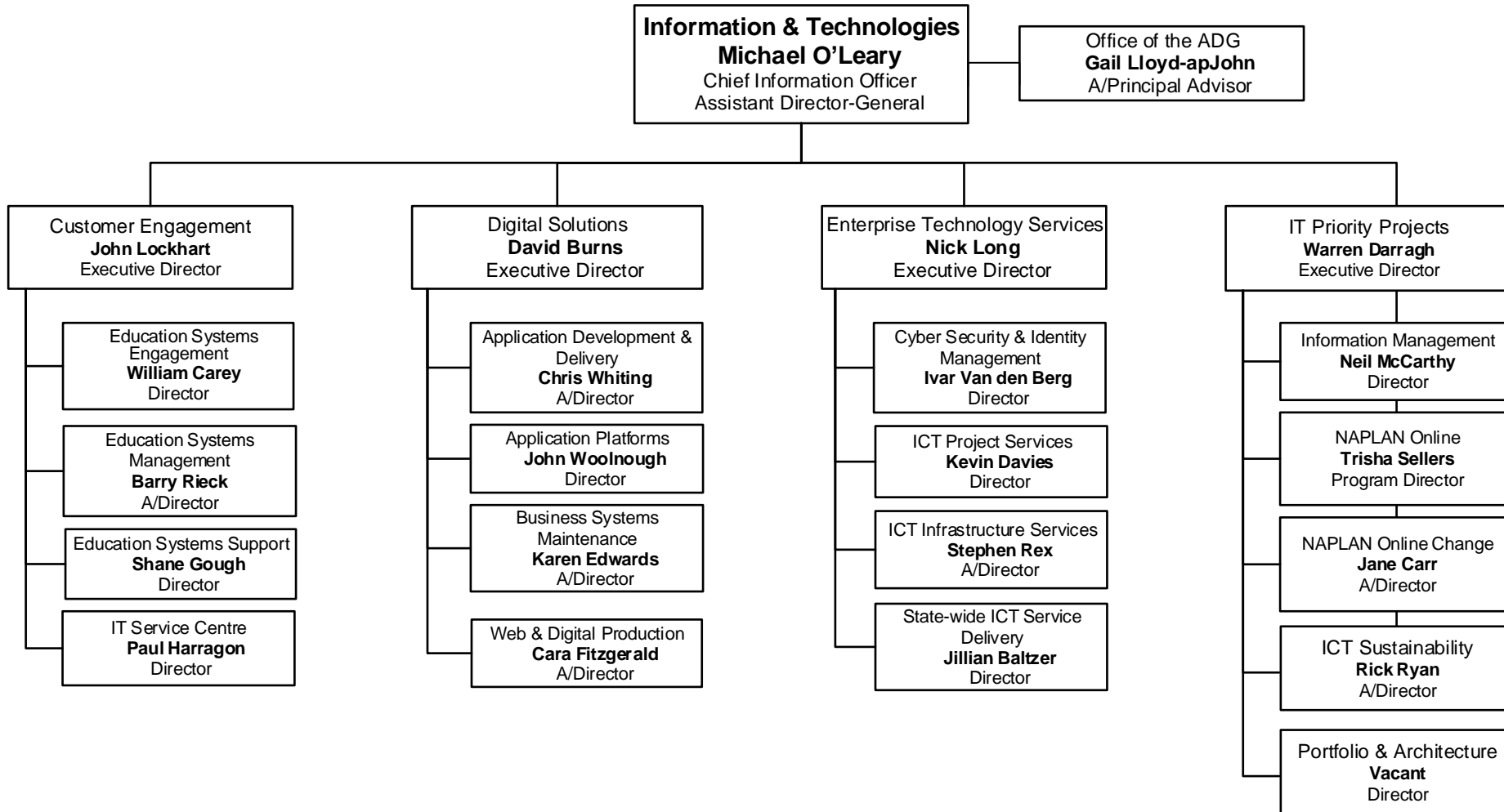
# Infrastructure Services



# Procurement

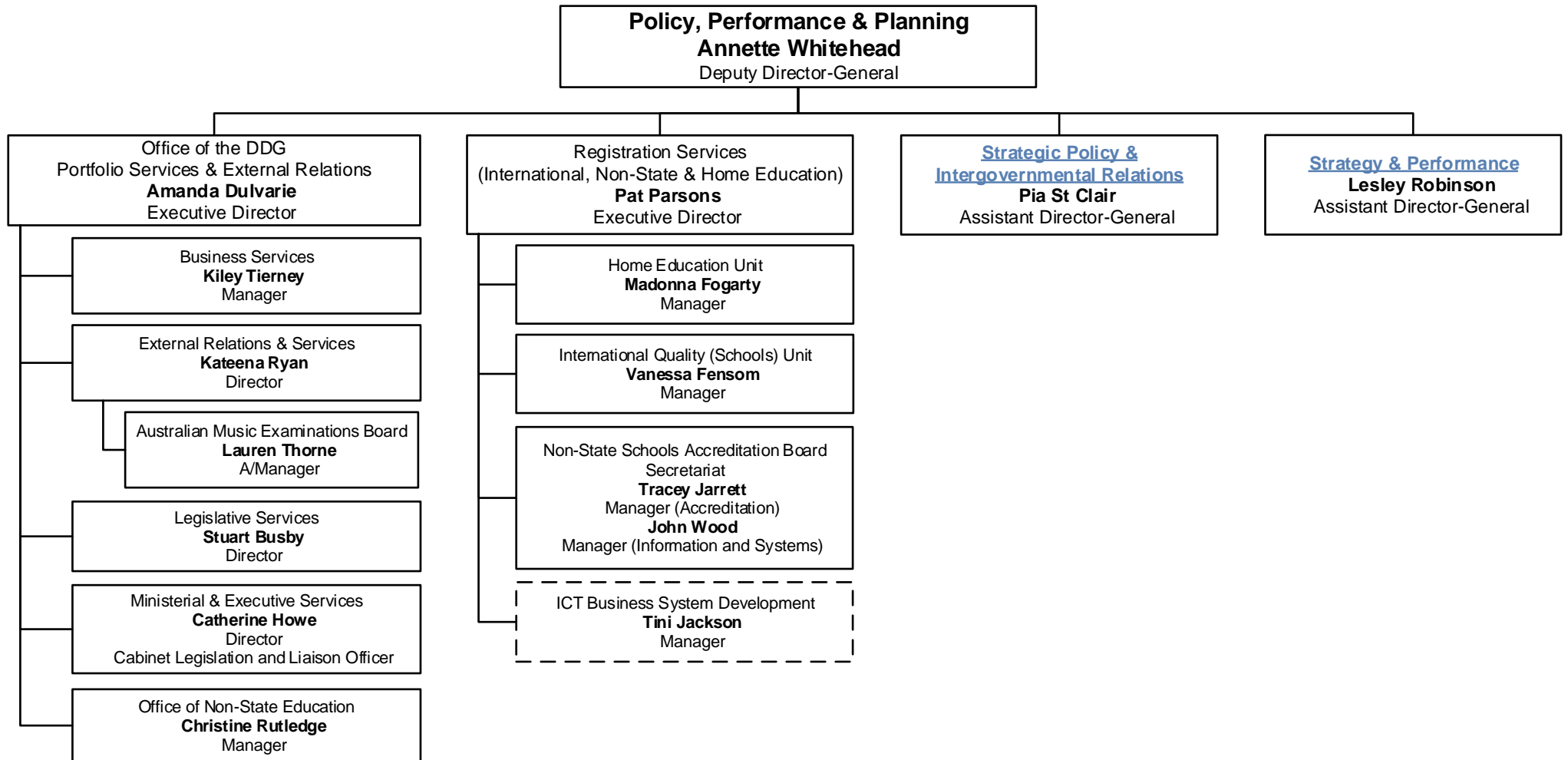


# Information and Technologies

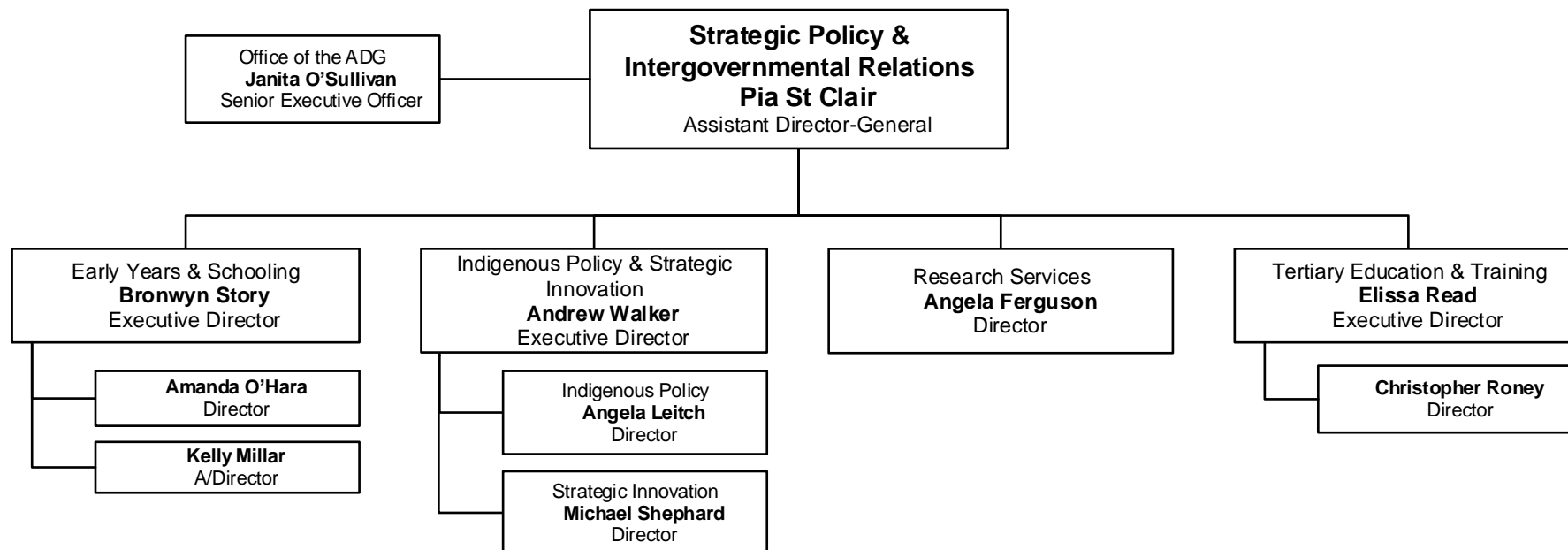




# Policy Performance and Planning



# Strategic Policy and Intergovernmental Relations



# Strategy and Performance

